

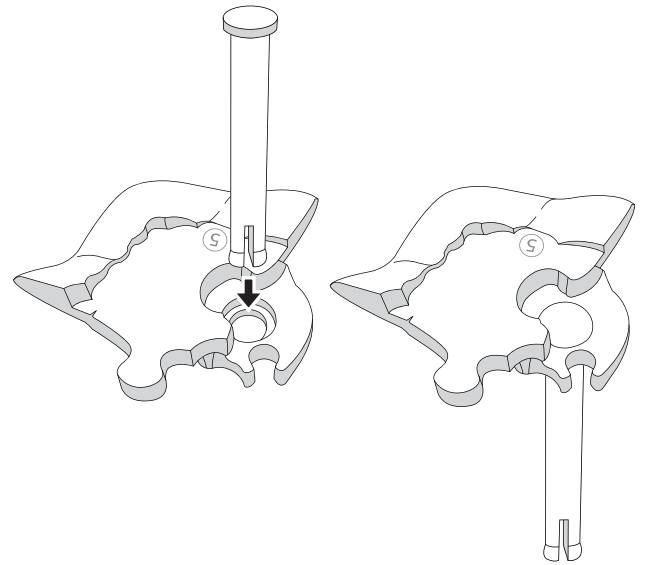
Item # 31031

**INSTRUCTIONS**

1. Please count and make sure all pieces are present before assembly.
2. The pole pieces are delicate. To prevent damage, do not use excessive force.
3. Assemble crystal puzzle by putting the puzzle pieces together in the order shown below.
4. Piece numbers are not necessarily in the order of assembly. Some pieces do not have numbers.
5. Missing a piece? Email [info@ugames.com](mailto:info@ugames.com) or call (415) 503-1600 with missing piece number.

STEP	PIECE #	STEP	PIECE #
1	Add piece 20	23	2
2	short stick w/ hat	24	9
3	16	25	27
4	38	26	15
5	3	27	1
6	24	28	8
7	28	29	5
8	30	30	Insert stick
9	31	31	26
10	10	32	4
11	39	33	25
12	36	34	22
13	7	35	21
14	29	36	11
15	19	37	35
16	34	38	40
17	23	39	37
18	14	40	32
19	6	41	33
20	17	42	12
21	13		
22	18		

**HINTS**



#30

Insert the stick into the upper body, and build the leg part in next step.

